



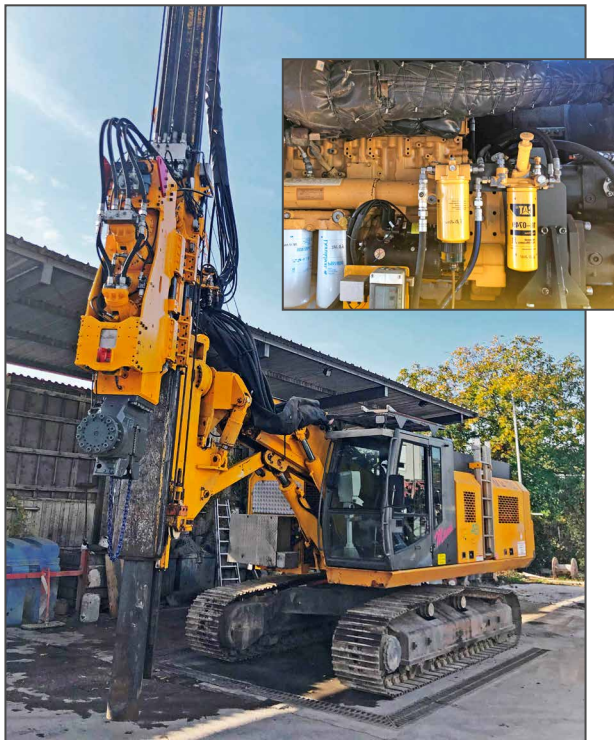
ABI MOBILRAM TM 14/17 SL

- 1 ABI Mobilram TM 14/17 SL, year 2009
on carrier SR35 standard undercarriage
CAT-diesel engine C15, 433 kW
about 9900 working hours



- 1 ABI Vibrator MRZV 20 V, year 2009
with clamp and stander

Condition: perfect working order !



Prior to Sales all machines will be **checked and tested** according to the manufacturer's instructions.

USED FOUNDATION EQUIPMENT